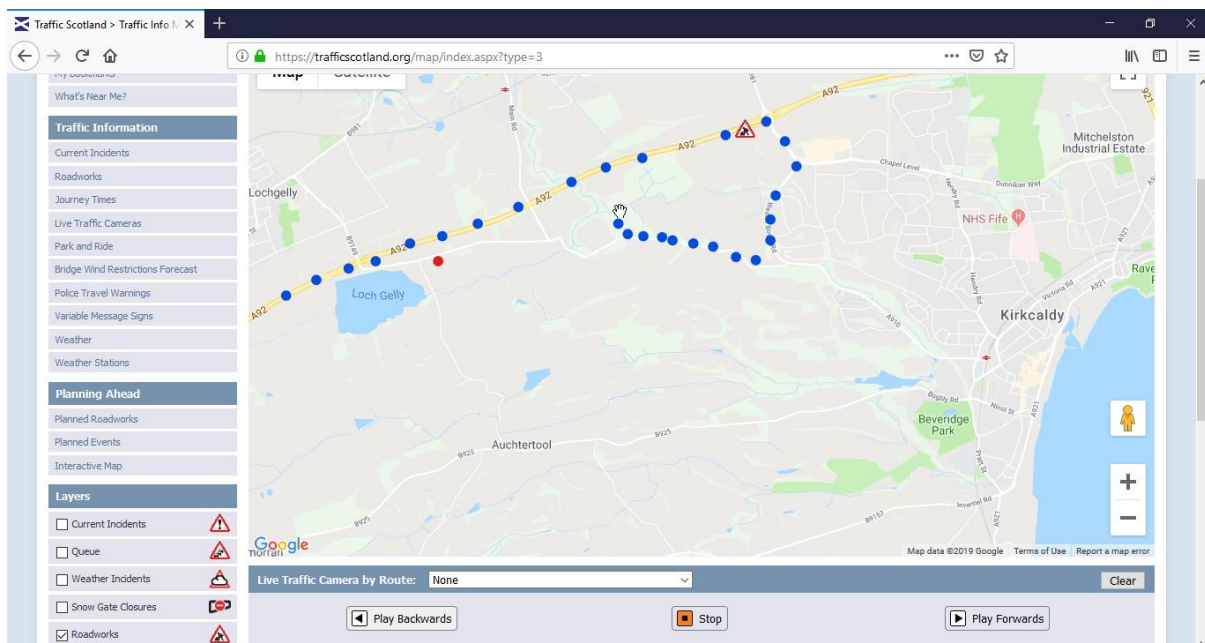


We've just found out that there may be a road closure that most people will use to get to the track tomorrow morning.

The closure is shown with the RED dot on the attached map. There is work being done on the overhead pylons between 6am and 8am.

An alternative is continue along the A92 until you get to the Kirkcaldy West turn off (next junction).

Take the A910 towards Kirkcaldy, go straight over the first roundabout, business units into the left.



Go down the hill and you come to another roundabout, retail park into left with Sainsbury petrol station visible. You want to take the 3rd exit (1st is retail park, 2nd is Chapel Level, 3rd is Wester Bogie Road).

The road is a big left hand sweeper, keep going until you see the forest on your right, turn right into Torbain Road (it's not a large sign so keep an eye out) just before.

It's very twisty to start with, but you will be on a long straight section after about 1 mile, there will be open fields on your left, and forest on right, you turn into the forest track via the green gate with CCTV warning signage.

Go up this forest track for about 1 mile, pass the moto x on your right, just over the hill we are in the next field.

