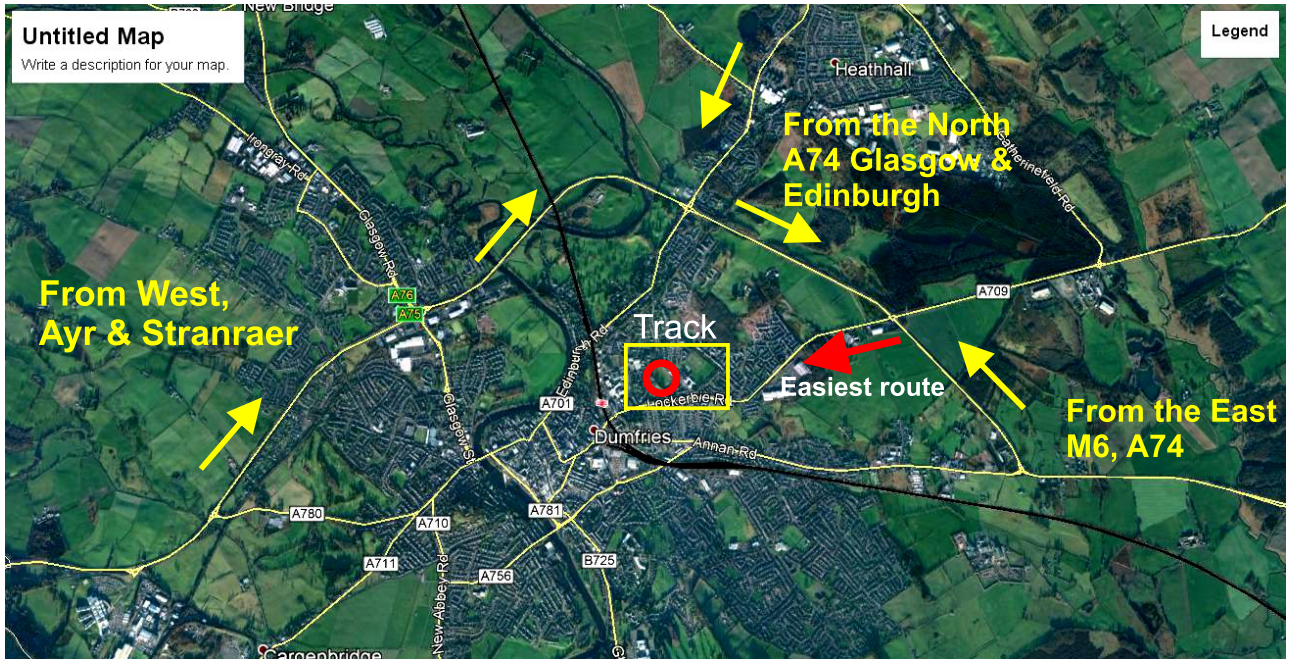


Getting there: Postcode is DG1 3BA



Best route in is the A709 Lockerbie Road

SORC Information Sheet

Staying overnight: There are a few B&B's close by the track. One actually backs onto the track (Hamilton House). Recommendations on request.

There is no camping at the track due to council restrictions.

If you don't need your car, the venue requests that you remove it to the main entrance car park.

Gates open at 7.00am. Portaloo available until main toilets open at the David Keswick Centre. Please use toilets in main building where possible. (3 minute walk)

The whole area is a no smoking zone.

We are overlooked by a few residential properties. Can you please make efforts to remain as quiet as possible until 9am. (and thereafter)
We also run race control with fewer 'beeps' with the neighbours in mind.

Please keep generators away from fuel cans and away from the surrounding houses.

***Driver Net for Windows will be available.
Key is DMCC1234.***

Compressor will be available.

There will be a Tuck Shop selling crisps, chocolate and juice.

We'll also have a raffle which will be drawn during the Finals sorting

SORC Information Sheet

Timetable:

Gates at 7.00am

Drivers briefing 8.00am

3min Practice Heats 8.30am

Qualifying 10.00am

Prize giving and Raffle 4.30pm

Finals 5pm

Other rules:

Charge LiPo's in a LiPo sack. Failure to do so will lead to exclusion from the meeting.

Cars must meet BRCA Regulations.

Use of Driver Aids prohibited.

It is your responsibility to ensure your PT works. Race Control will endeavor to inform you if it isn't.

Please do your best to keep the area as quiet as possible during race day. Most of the neighbours are very tolerant, but others are less so. Please don't do anything that can give them reason to complain.

Thanks!

Happy Racing!!!!